



BLUETTI EP600

6000W Energy Storage System

How to connect the EP600 to the home main panel.

Contents

1. Declaration.....	2
2. Installation preparing.....	2
3. Circuit connection.....	4
4. Transfer switch.....	9
5. More information.....	10

1. Declaration

- The installation should be performed by a licensed electrician. Improper installation may result in death or serious injury and property damage.
 - This document is provided for reference purpose ONLY and does not constitute legal advice. Please consult the local licensed electrician for details.
- BLUETTI shall not be liable for any damage or injury caused by improper installation of the backup system.

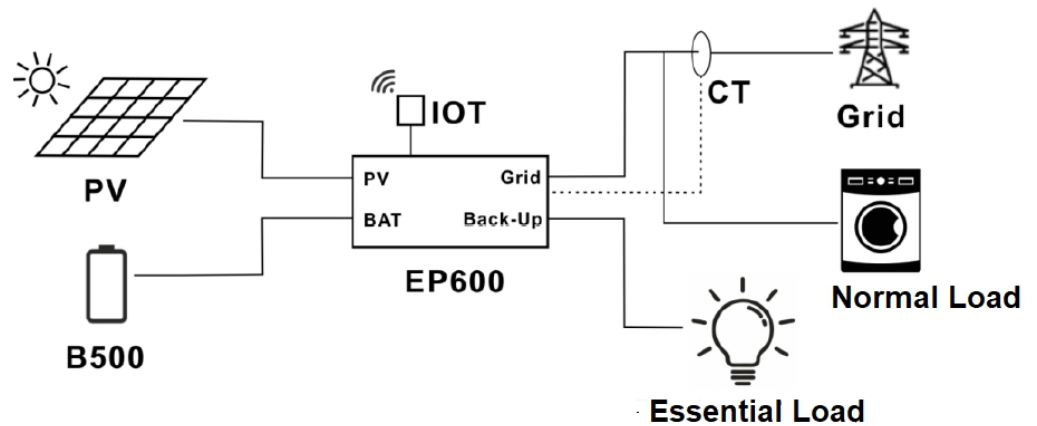
2. Installation preparing

2.1 Find out the essential household appliances

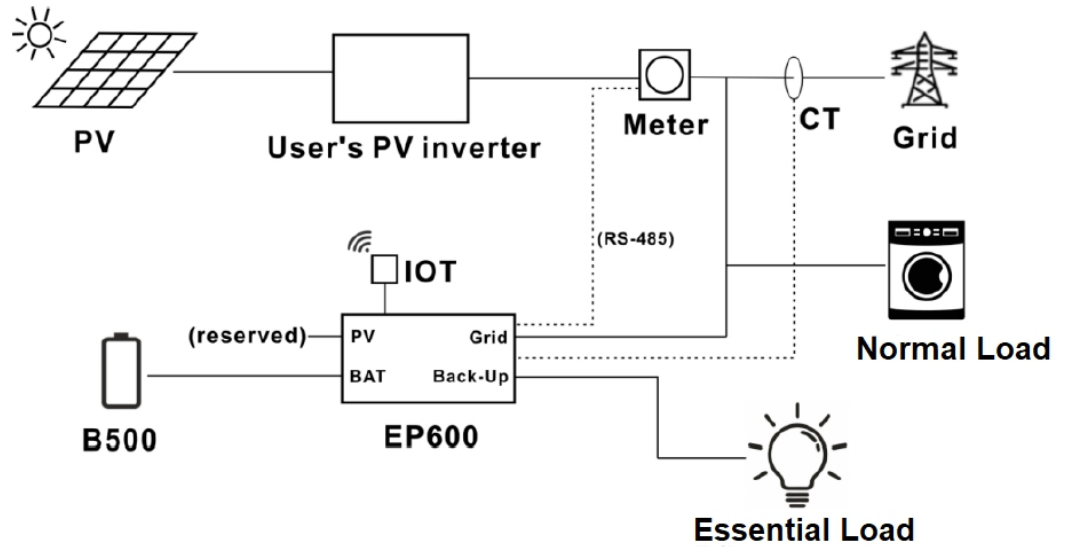
Before installing the EP600 energy storage system, you should consider that if we need to make a backup system . If there is no power outage over the past few months ,you don't need that. If there a lot of power outage, you need to build a backup system. You need to find out which are the essential appliances and to make sure each rated power is less than 2000W singer phase, or less than 6000VA three phase.

NOTE: Other appliances ,they must be connected to the public grid, such as AC load, as following :

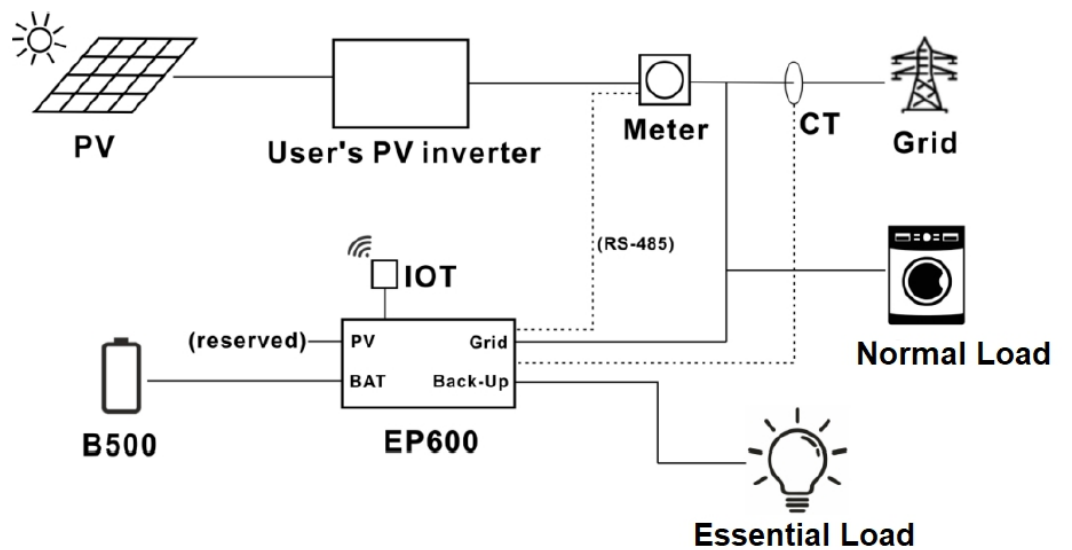
DC coupling



AC coupling



AC coupling



2.2 Create a plan for the essential backup appliances

Before installing your EP600 energy storage system, you need to create a plan for the essential backup appliances to balance the loads within the three phases of your home. EP600 support rated 2000VA AC output each phase or three phase 6000VA output . Please allocate the load circuit breakers from which run the appliances.

Load Balancing Example :

Circuit Breaker Connections: Three 230 V single pole circuit breakers, or one three pole circuit breakers

How to connect the EP600 to home main panel

PHASE ONE (Toggle Switch QF3)		PHASE TWO (Toggle Switch QF4)		PHASE THREE (Toggle Switch QF5)	
Main Appliance Hooked Up	Appliance Running Watts	Main Appliance Hooked Up	Appliance Running Watts	Main Appliance Hooked Up	Appliance Running Watts
Refrigerator	800	TV	200	Computer	200
Indoor Lighting	800	Vacuum Cleaner	1000	Hair Dryer	1600
Total Running Watts Phase One:	1600	Total Running Watts Phase two:	1400	Total Running Watts Phase three:	1800

Total Running Watts Phase One: <2000W,

Total Running Watts Phase Two: <2000W,

Total Running Watts Phase Three: <2000W,

You're OK!

or just connect one three phase appliance to the Toggle Switch QF2 NOT more than 6000VA. You're OK!

NOTE:

Overload for 10 minutes at a maximum power of 2200VA per phase, total 6600VA three phase for the EP600.

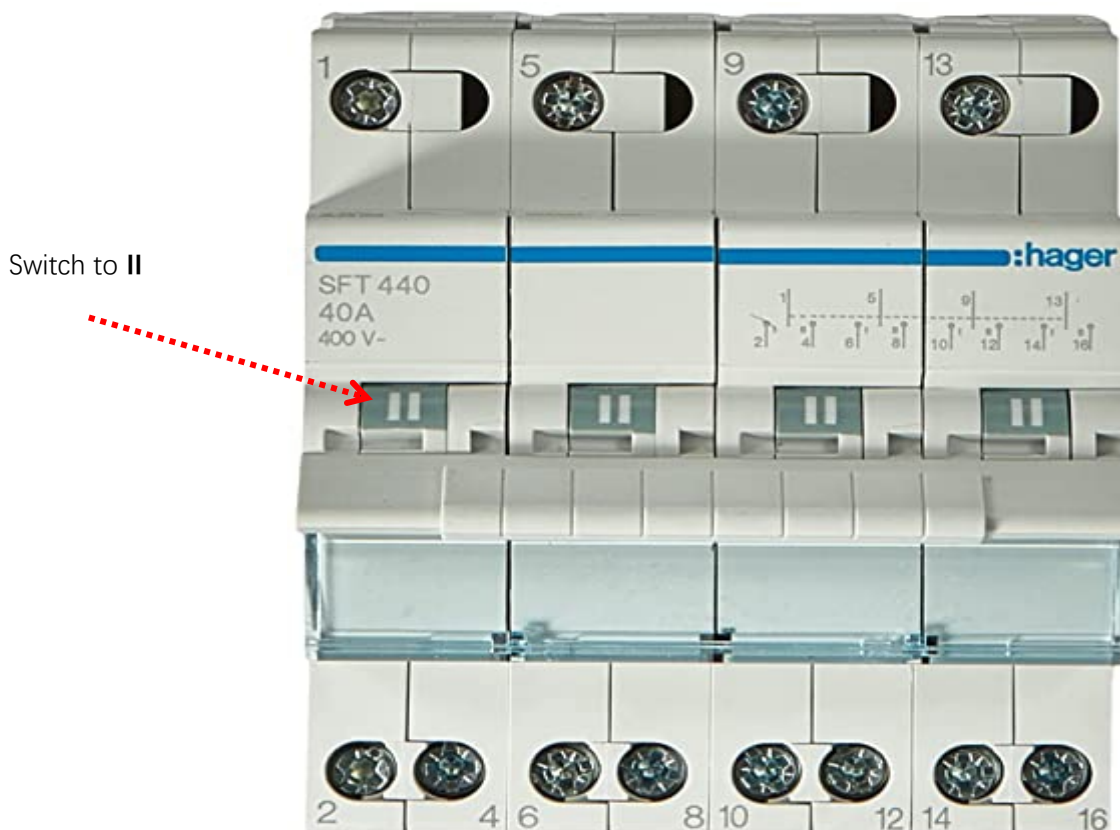
3. Circuit connection

Firstly please purchase a manual transfer switch and some breakers as following:

NO.	Accessories	Spec	Picture
1	Transfer switch : SFT440	40A 4P 400V	1
2	QF1	C32 3P	1
3	QF2	C16 3P	1
4	QF3	C16 1P	1
5	QF4	C16 1P	1
6	QF5	C16 1P	1

The Transfer switch : SFT440 is very important, please know how to connect it.

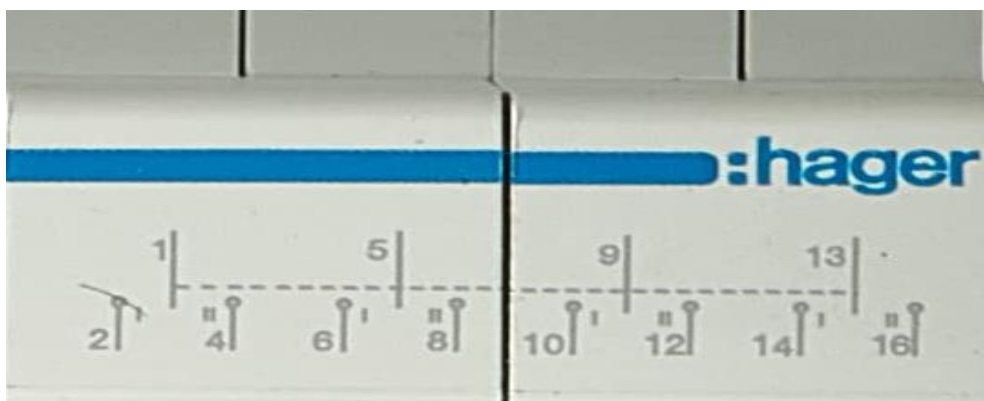
How to connect the EP600 to home main panel



Before installing the EP600 , We will make a plan that as flowing :

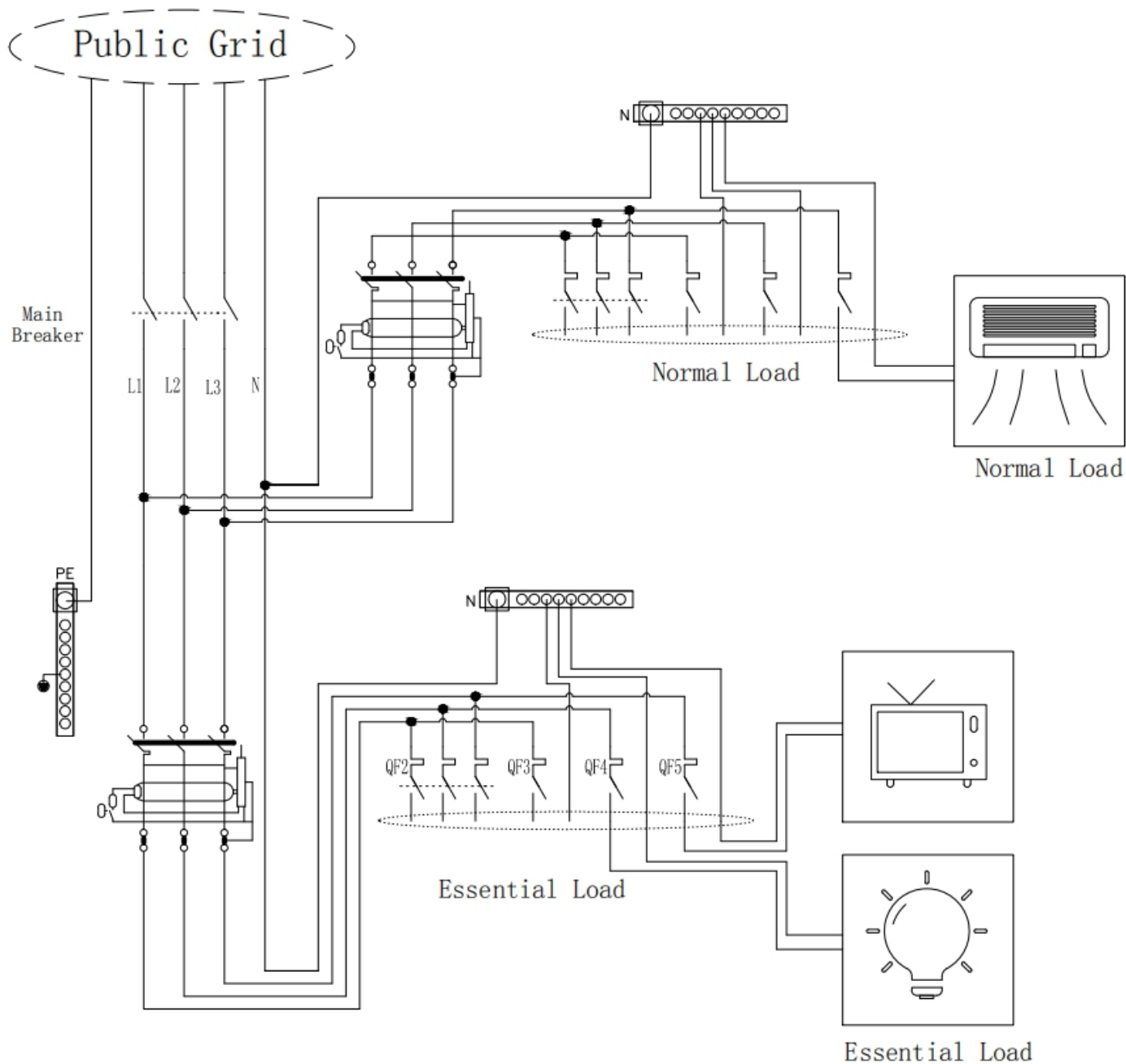
- 1) Switch to I is use the EP600 supply, we have UPS mode ,so owners can switch to I all the time until EP600 have something fault.
- 2) When something fault on the EP600 ,we need to switch to II is use the public grid supply

NOTE: If the public power gird is always outage, please Switch to I to use EP600 UPS mode, if not , switch to II



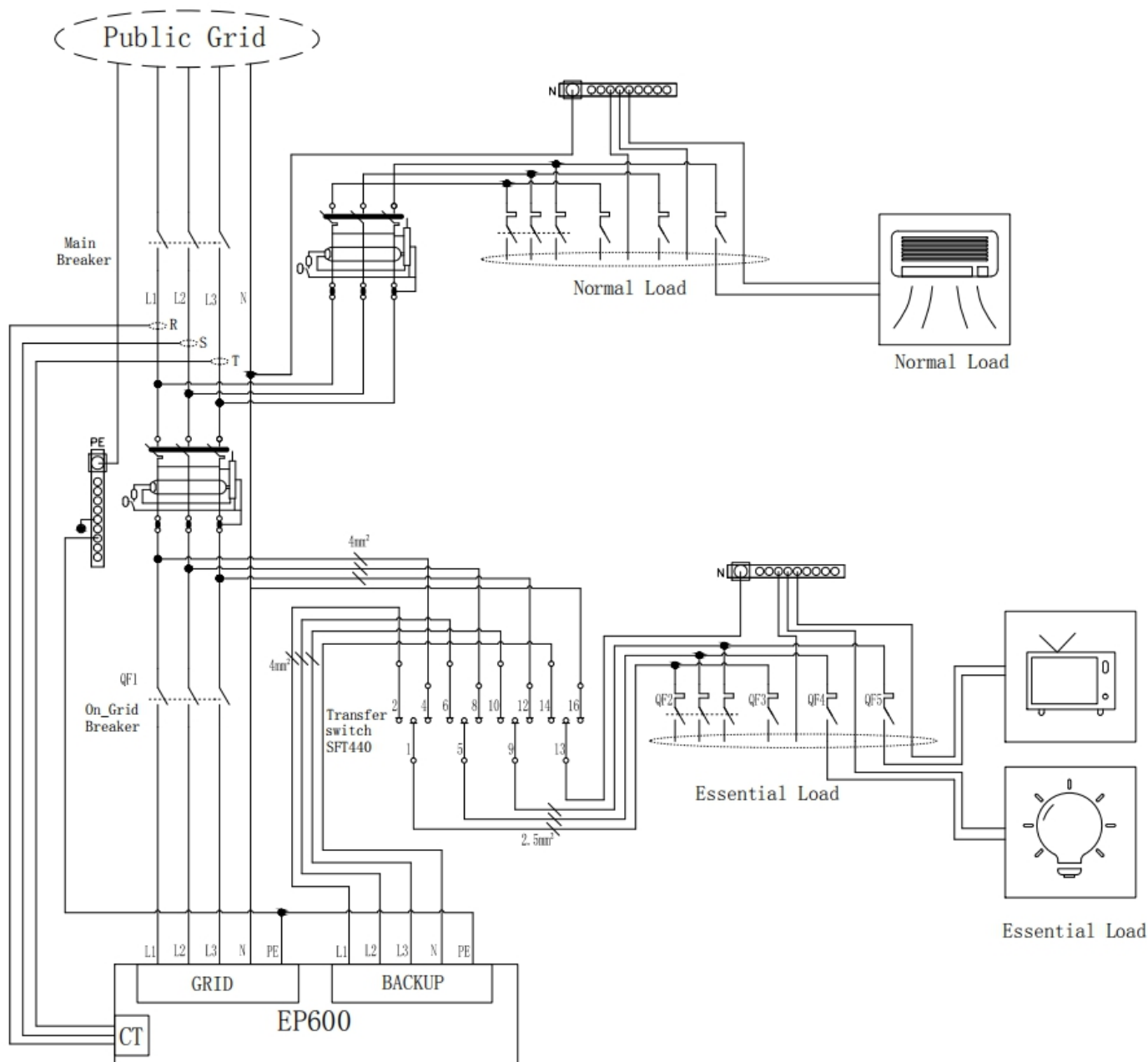
How to connect the EP600 to home main panel

Following is a example home circuit before EP600 installation



How to connect the EP600 to home main panel

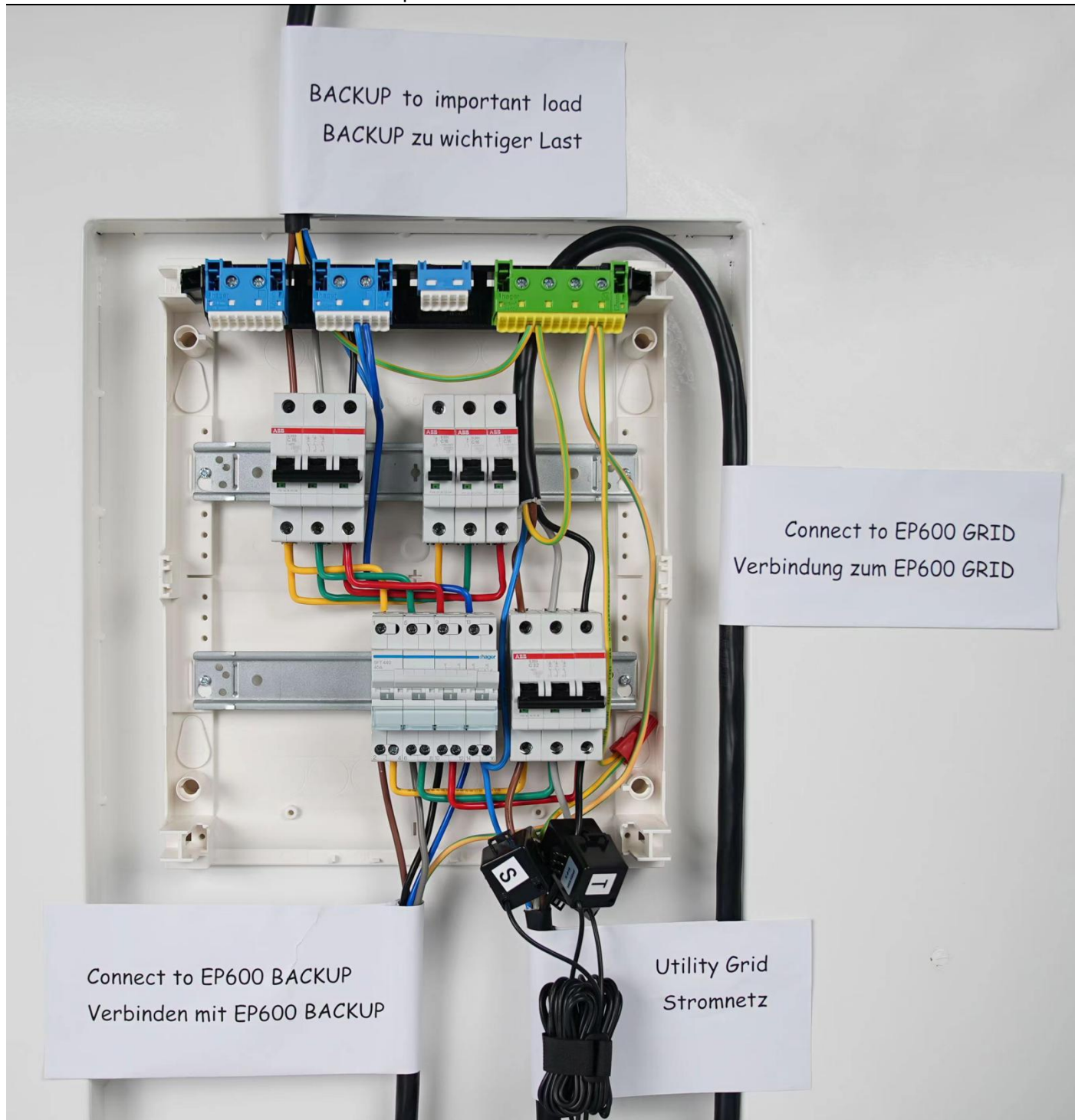
Then , connect the EP600 and transfer switch to the home circuit as following:



NOTE :

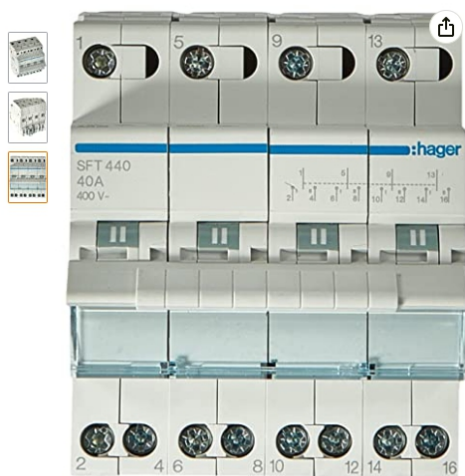
1. Connect the L1/L2/L3/N wires from EP600 BACKUP to the SFT440's pin 2(L1), pin 6(L2), pin 10(L3), pin 14(N) ;
2. Connect the L1/L2/L3/N wires from public Grid to the SFT440's pin 4(L1), pin 8(L2), pin 12(L3), pin 16(N) ;
3. Move away the wires from the public grid on the essential appliances' breakers ,then connect pin1(L1), pin 5(L2), pin9(L3), pin 13(N) of SFT440 to the essential appliances' breakers.
4. The CT is used for detecting the current ,so please connect rightly following the installation video.

How to connect the EP600 to home main panel



4. Transfer switch

Transfer switch is necessary for building a partial home backup appliances: the following for reference :



Für größere Ansicht Maus über das Bild ziehen

HAGER SFT440 - Commutatore 1-0-2 tetrapolare 40A 4 moduli con comune in alto

Marke: Hager
 59 Sternebewertungen
 Amazons Tipp für "netzschalter notstrom"

Preis: **36,36€**
 Preisangaben inkl. Ust. Abhängig von der Lieferadresse kann die Ust. an der Kasse variieren. Weitere Informationen.

Aktuelle Angebote Werbeaktion verfügbar 1 Werbeaktion

- Art der Bedienung: Schalter.
- 4 Poloschirt
- Gemeinsam mit Arriba
- zugeordnete Frequenz: 50/60 Hz

Spezifikationen für diesen Artikel

Anzahl der Artikel	1
Anzahl der Positionen	1
Art der Stromquelle	Gleichstrom
Artikelnummer	SFT440

Visit web address:

https://www.amazon.de/HAGER-SFT440-Commutatore-tetrapolare-moduli/dp/B00SCD72NA/ref=sr_1_113?__mk_d_e_DE=%C3%85M%C3%85%C5%BD%C3%95%C3%91&crd=JLKSZ5KGNX4&keywords=hager&qid=1664528870&qu=eyJxc2MiOiI3LjQ0liwicXNhIjoiNi40NiIsInFzciIjoiUuNzMifQ%3D%3D&sprefix=hager%2Caps%2C419&sr=8-113

or

SPAREN SIE BIS ZU 10% MIT MULTI-RABATT



Ähnlichen Artikel verkaufen? [Selbst verkaufen](#)

Wahlschalter Umschalter 1-0-2 16A 25A 32A 40A 63A 80A 100A 125A Reiheneinbau PSA

16 verkauft in den letzten 24 Stunden

Artikelzustand: Neu
 Herstellernummer: 4-polig 32A

Multi-Rabatt: 1 kaufen EUR 51,99/Stk. 2 kaufen EUR 49,91/Stk. 3 kaufen EUR 48,35/Stk.

4 oder mehr für EUR 46,79/Stk.

Stückzahl: 1 82 verfügbar 8.558 verkauft / [Bewertungen ansehen](#)

Preis: **EUR 51,99/Stk.**
 (inkl. MwSt.)

Sofort-Kaufen

In den Warenkorb

[Auf die Beobachtungsliste](#)

8.558 verkauft

1.097 Beobachter

Versand: Ggf. kein Versand nach China. Lesen Sie die Artikelbeschreibung oder [kontaktieren Sie den Verkäufer](#), um Informationen zu Versandoptionen zu erhalten. | [Weitere Details](#)
 Standort: Görlitz, Deutschland

Lieferung: Weitere Infos zur Lieferzeit in der Artikelbeschreibung

Rücknahmen: Keine Rückgabe | [Weitere Details](#)

https://www.ebay.de/itm/284416047307?chn=ps&var=585962128862&trkparms=ispr%3D1&amdata=enc%3A1LQ_

How to connect the EP600 to home main panel

Q21NJSF6GOIAQNbws-w7&noover=1&mkevt=1&mkrid=707-134425-41852-0&mkcid=2&mkscid=101&itemid=585962128862_284416047307&targetid=1716911581159&device=c&mktype=pla&googleloc=9043390&poi=&campaignid=17943303986&mkgroupid=140642150118&rlsatarget=pla-1716911581159&abclid=9301060&merchantid=115461285&gclid=CjwKCAiAh9qdBhAOEiwAvxlok_q2nMZkazDxeYYmnb7Ee3OX0enPxAfhiF848fmpxs7rpcjrFtSktxoCwDAQAvD_BwE

5. More information

Website: www.bluettipower.eu

Email: sale-eu@bluettipower.com / sale-uk@bluettipower.com